

Flex Builder Setting

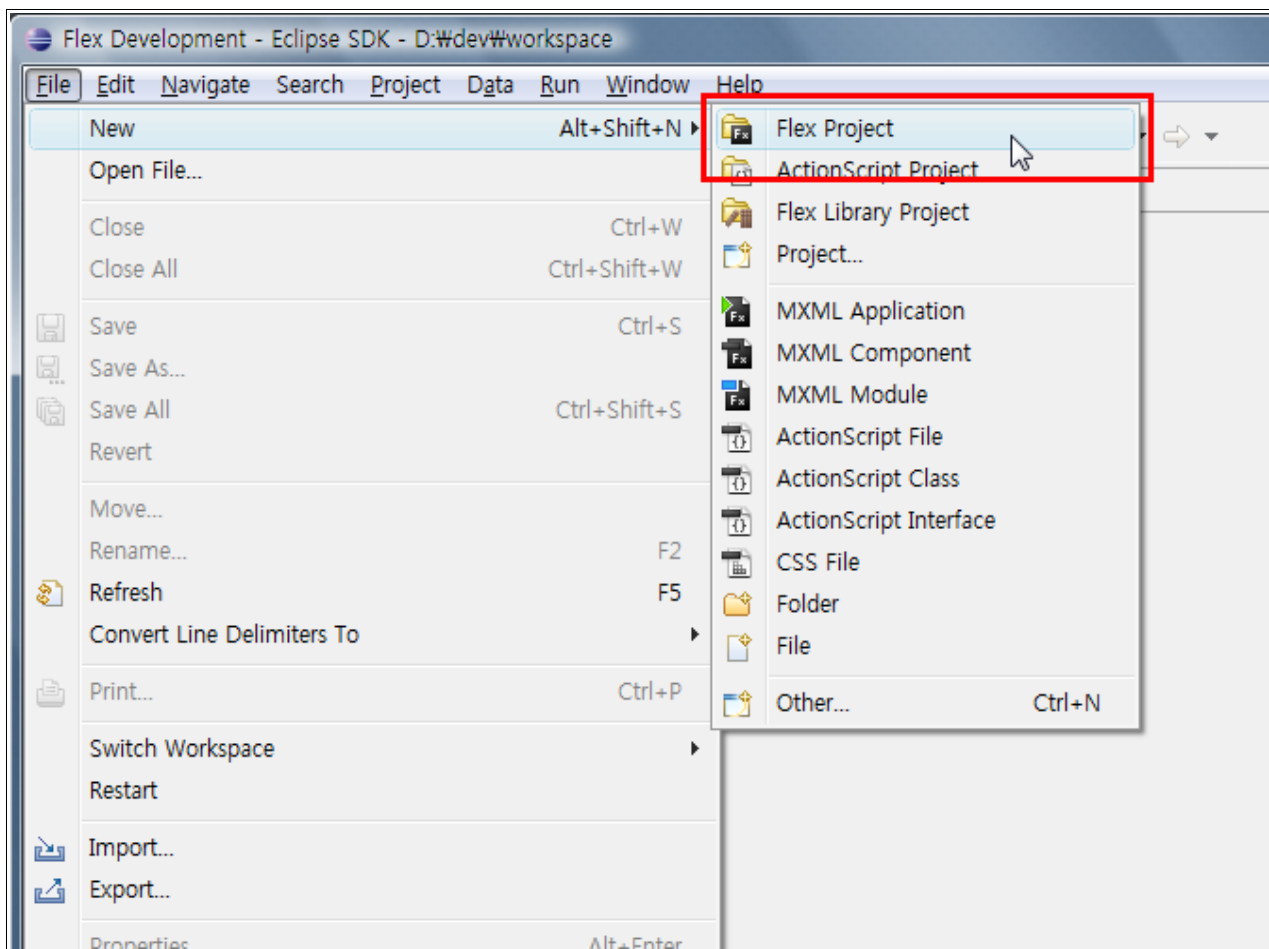
From Openzet

Overview

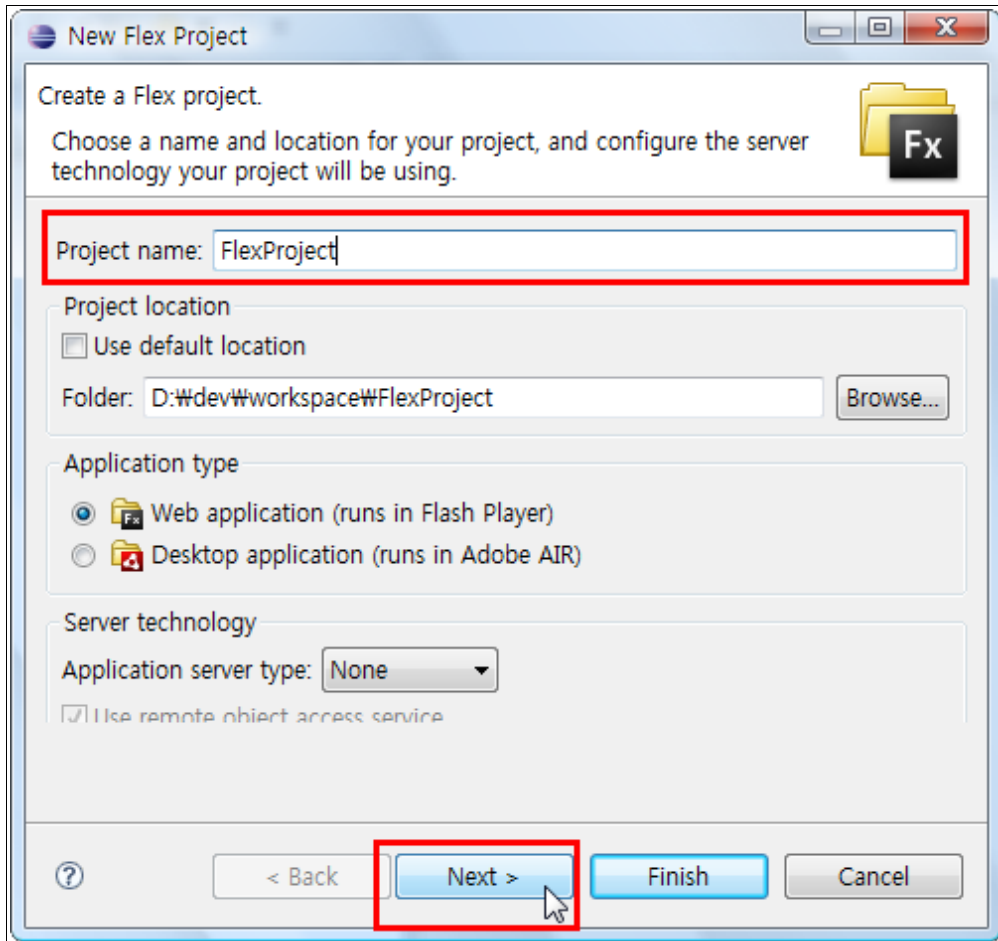
This is an overview to show how to set a build path in Flex builder for OpenZet framework.

Configuration of OpenZet library

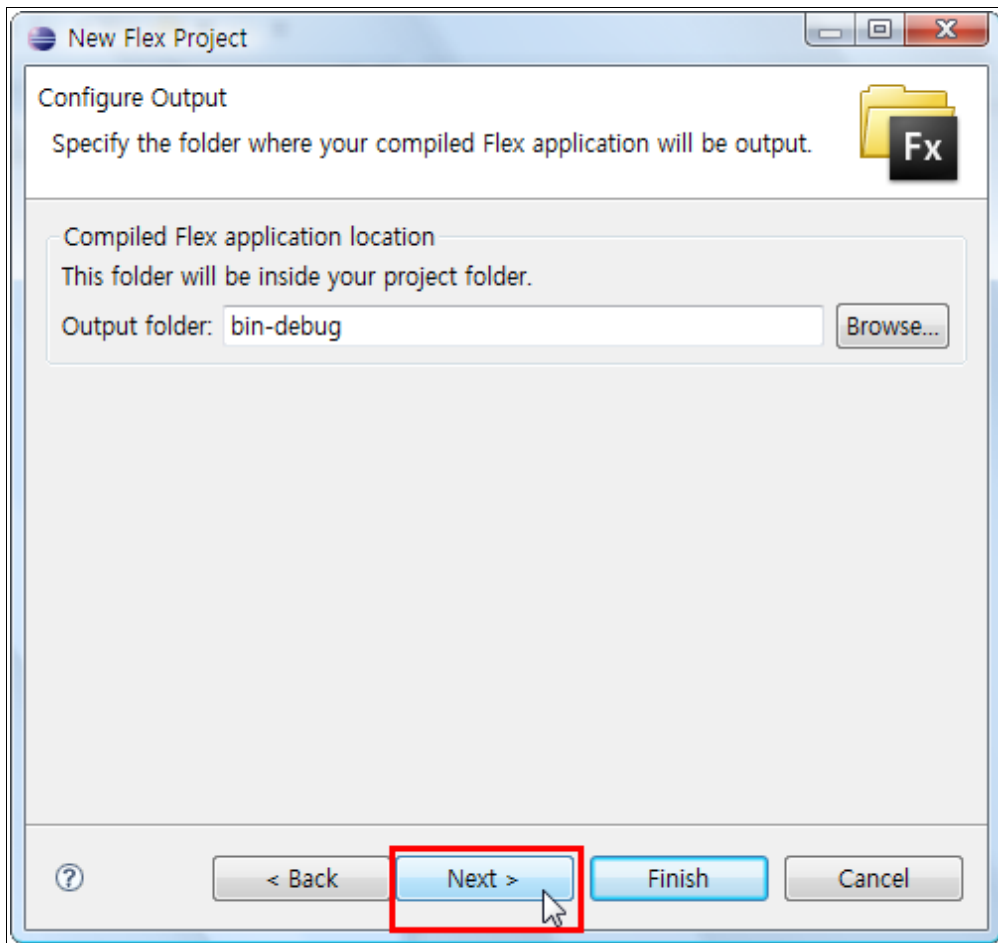
Create a new project by selecting 'Flex Project' from 'New' menu.



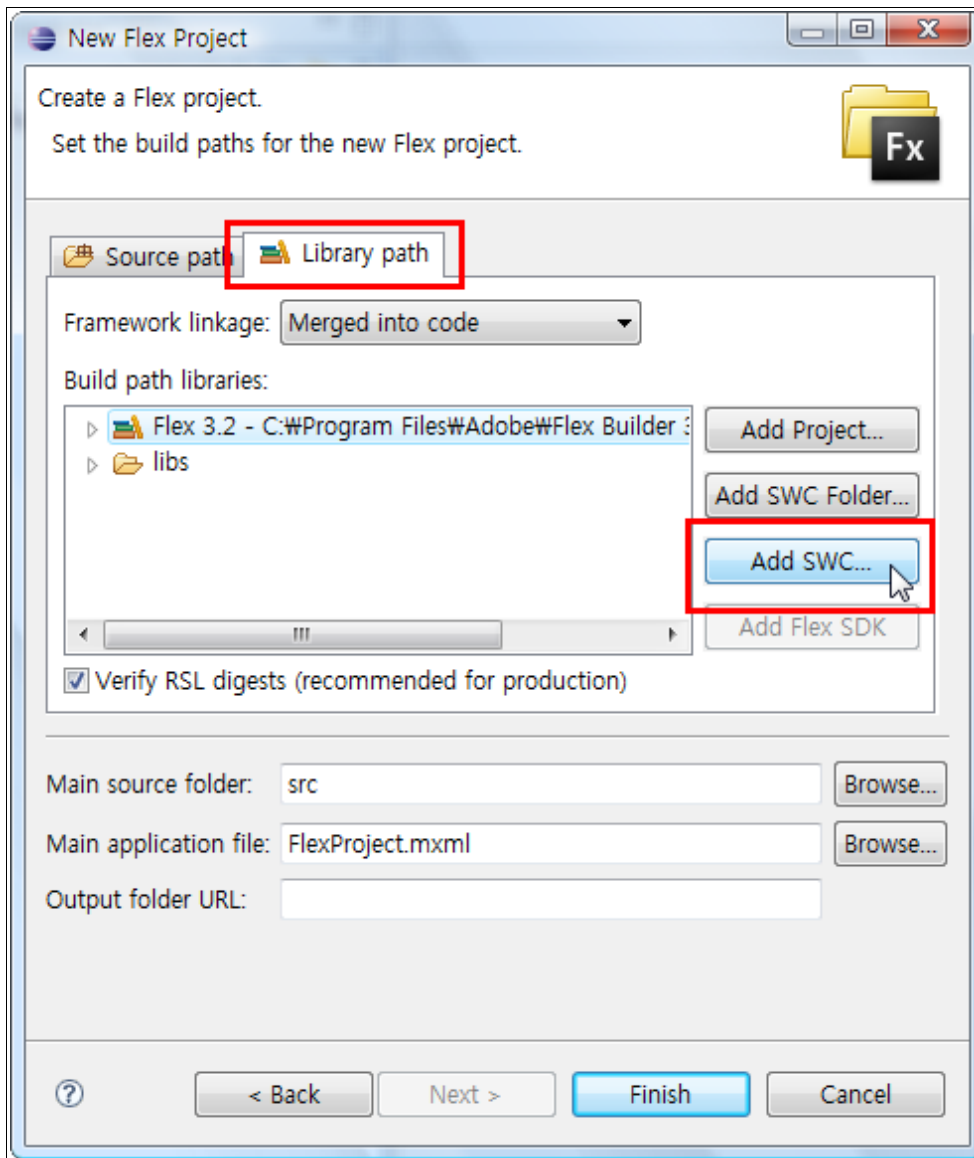
Insert your project name in 'Project name' field and click 'Next'.



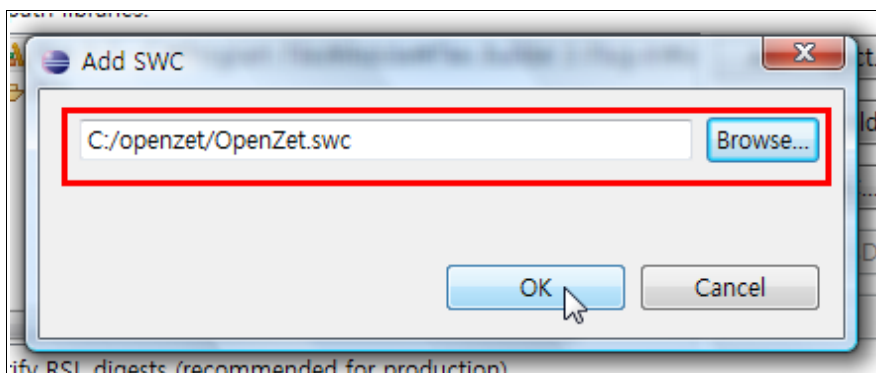
Specify the output (.swfs) folder for the project.



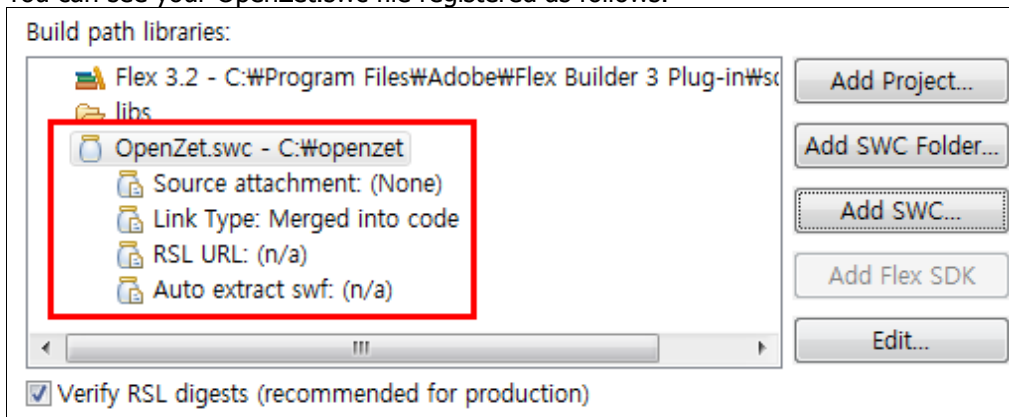
In the second tab, select 'Library path' and click 'Add SWC' button.



Click 'Browse' button to open OpenZet.swc file.



You can see your OpenZet.swc file registered as follows.



Test Application

Specify the namespace to use OpenZet framework as follows:

```
[xmlns:zet="http://www.openzet.org/2009/mxml"]
```

Now in an application mxml file, you can create an OpenZet control by using 'zet' tag like the following.

```
<?xml version="1.0" encoding="utf-8"?>
<mx:Application
  xmlns:mx="http://www.adobe.com/2006/mxml"
  xmlns:zet="http://www.openzet.org/2009/mxml">
  <mx:Script>
  <![CDATA[
import mx.collections.ArrayCollection;

[Bindable]
private var sampleAC:ArrayCollection = new ArrayCollection([
  {index:1, data1:100, data2:200},
  {index:2, data1:120, data2:300},
  {index:3, data1:110, data2:210},
  {index:4, data1:140, data2:220},
  {index:5, data1:90, data2:210},
  {index:6, data1:100, data2:240},
  {index:7, data1:130, data2:210},
  {index:8, data1:140, data2:200},
  {index:9, data1:110, data2:180},
  {index:10, data1:100, data2:220}]);
]]>
</mx:Script>
<zet:ZetCartesianChart dataProvider="{sampleAC}" showSeriesBox="true">
  <zet:series>
    <mx:ColumnSeries yField="data2" displayName="Data2" />
    <mx:LineSeries yField="data1" displayName="Data1" />
  </zet:series>
</zet:ZetCartesianChart>
</mx:Application>
```

Retrieved from "http://www.openzet.org/wiki_en/index.php/Flex-build-path"